

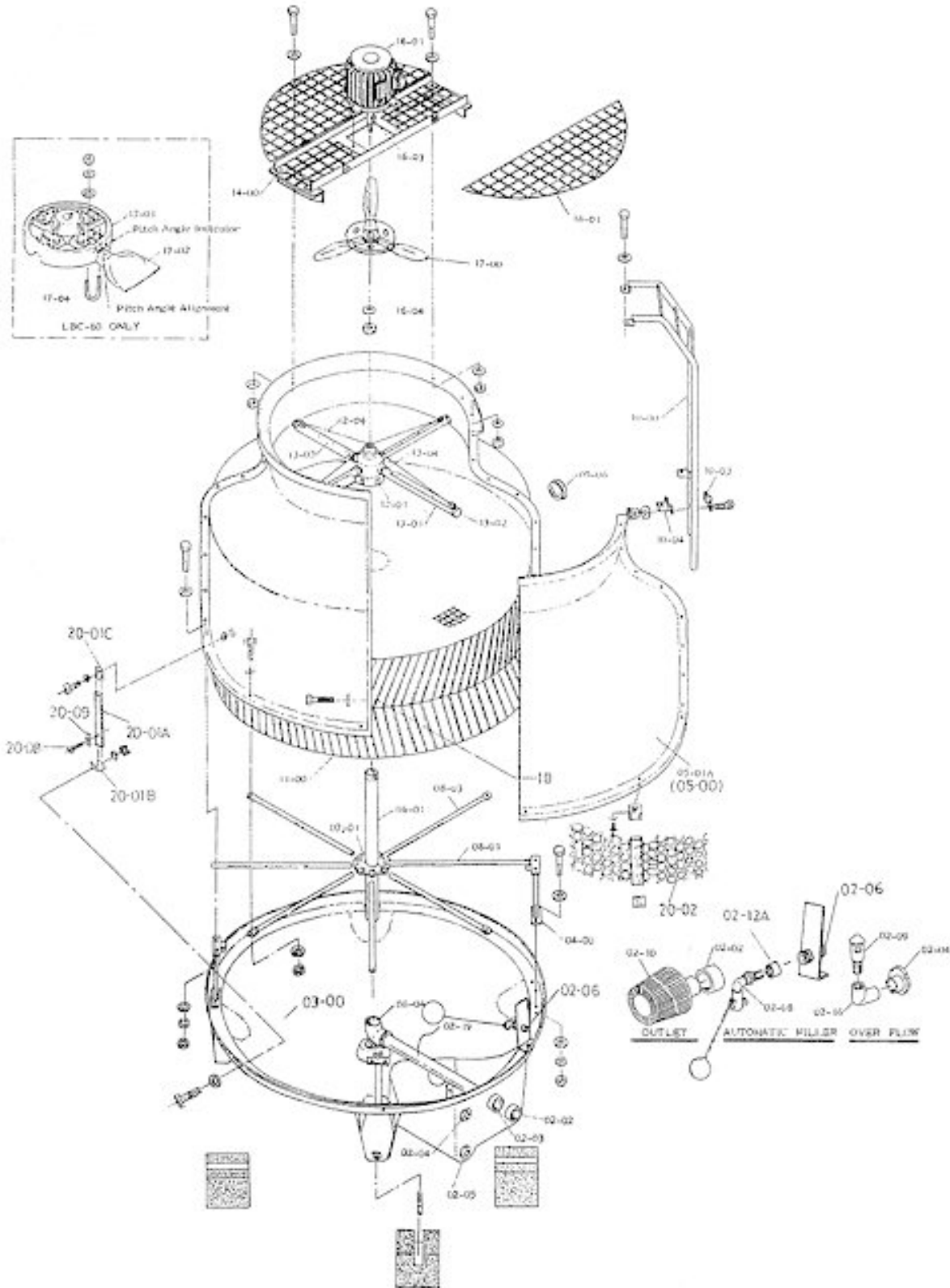
## ACTS-50 Specifications

| <b>Basic Tower Construction Materials</b> |                    |
|---|--------------------|
| Tower support frame assembly:             | -                  |
| Casing:                                   | FRP                |
| Casing supporter:                         | Nylon              |
| Cold water basin:                         | FRP                |
| Filling:                                  | PVC                |
| Filling support:                          | PVC                |
| Fan guard:                                | PP                 |
| Mechanical equipment support              | HDGS               |
| Air inlet louver:                         | PVC                |
| <b>Structural Details</b>                 |                    |
| Overall diameter:                         | 79 in              |
| Overall height:                           | 75 in              |
| Dry weight:                               | 435 lbs            |
| Operating weight:                         | 1,313 lbs          |
| Total pump head:                          | 6.6 ft             |
| Design wind load:                         | 30.7 lb/sq ft      |
| <b>Fan Motor</b>                          |                    |
| Number of motors:                         | one unit per tower |
| Type:                                     | Induction          |
| Insulation:                               | E class            |
| Rated HP:                                 | 1.5 h. p.          |
| Voltage and phase:                        | 220/440-3          |

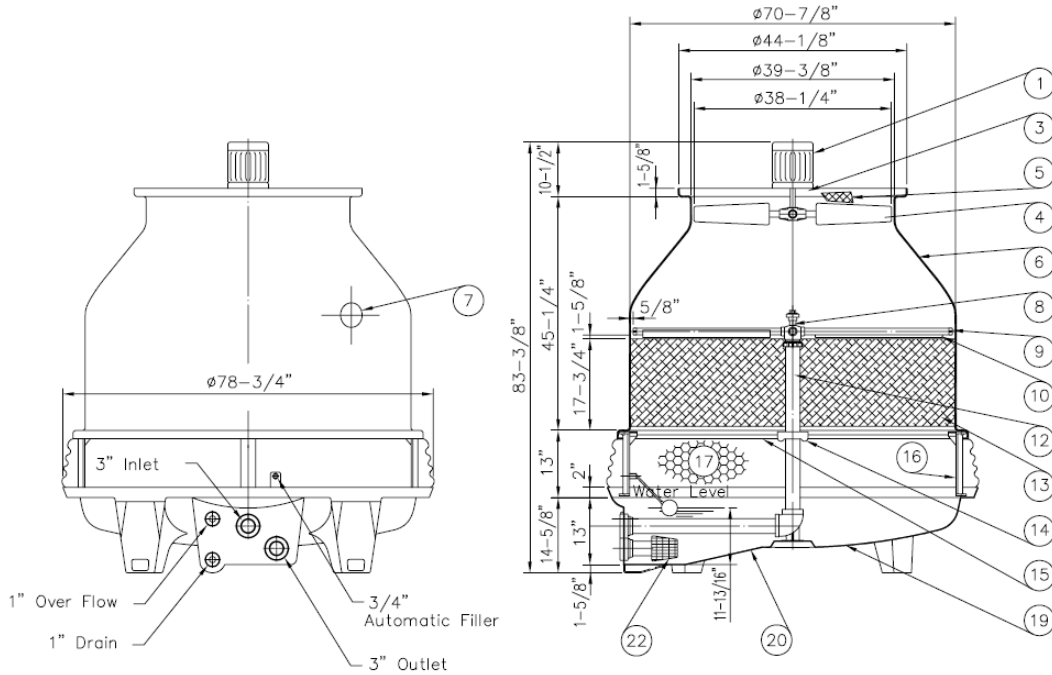
| <b>Piping Connections</b>              |                            |
|--|----------------------------|
| Primary water inlet diameter:          | 3 in                       |
| Primary water outlet diameter:         | 3 in                       |
| Auto fill inlet diameter:              | 0.75 in                    |
| Quick fill inlet diameter:             | - in                       |
| Overflow outlet diameter:              | 1 in                       |
| Drain diameter:                        | 1 in                       |
| <b>Design and Operating Conditions</b> |                            |
| Nominal Tons:                          | 50                         |
| Tower type:                            | Counter Flow Induces Draft |
| Water flow rates:                      | 105 gpm                    |
| Hot water temperature:                 | 95° f                      |
| Cold water temperature:                | 85° f                      |
| Ambient wet bulb                       | 75° f                      |
| Total fan BHP:                         | 1.5 h. p.                  |
| Drift loss of water flow rates:        | 0.002%                     |
| Evaporation loss of water              | 0.93%                      |
| <b>Mechanical Equipment</b>            |                            |
| Fan unit:                              | one unit per tower         |
| Type:                                  | Axial Flow                 |
| Diameter:                              | 38 in                      |
| Blade material:                        | AC                         |
| Hub material:                          | AC                         |
| Nominal air volume:                    | 11,500 cfm                 |

# American Chillers & Cooling Tower Systems

## Assembly Diagram

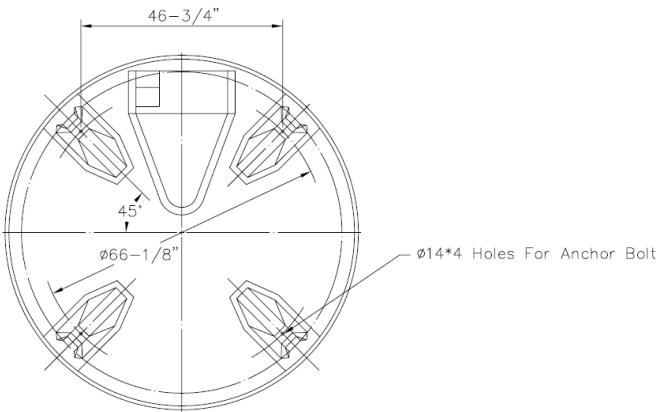


# American Chillers & Cooling Tower Systems



| Item No. | Description          | Qty   |
|----------|----------------------|-------|
| 1        | Fan Motor            | 1 pcs |
| 2        | V-Belt Reducer       | -     |
| 3        | Motor Frame Assembly | 1 set |
| 4        | Fan                  | 1 set |
| 5        | Fan Guard            | 1 set |
| 6        | Casing               | 4 pcs |
| 7        | Hand Hole            | 1 pcs |
| 8        | Sprinkler Head       | 1 set |
| 9        | Sprinkler Pipe       | 4 pcs |
| 10       | Eliminator           | 4 pcs |
| 11       | Tension Device       | -     |
| 12       | Stand Pipe           | 1 set |

| Item No. | Description       | Qty   |
|----------|-------------------|-------|
| 13       | Filling           | 1 set |
| 14       | Stopper or Column | 1 set |
| 15       | Filling Supporter | 1 set |
| 16       | Casing Supporter  | 4 pcs |
| 17       | Inlet Louver      | 1 set |
| 18       | Frame Assembly    | -     |
| 19       | Water Basin       | 2 pcs |
| 20       | Water Sump        | 1 pcs |
| 21       | Ladder            | -     |
| 22       | Strainer          | 1 pcs |
| 23       | Flange            | -     |
| 24       | Basin Supporter   | -     |



| Measurement | Distance (Inches) |
|-------------|-------------------|
| D1          | 66.125            |
| W           | 46.75             |
| B           | 10                |
| A           | -                 |
| h           | 8                 |
| h1          | -                 |
| C           | -                 |
| D2          | -                 |
| Anchor Bolt |                   |
| Size (In.)  | Length (In.)      |
| 0.50        | 4.75              |