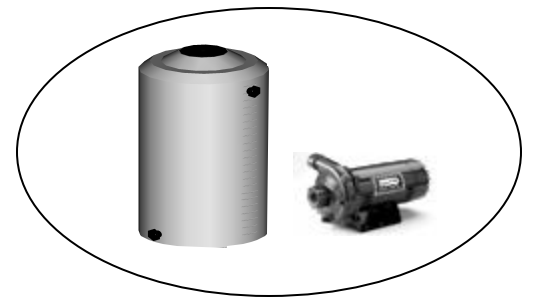


MODULAR WATER CHILLER



Features:

- Scroll compressors
- Refrigeration, pressure, and temperature gauges
- Heavy duty tubular frames
- Stainless Steel Evaporator
- Remote control panel includes thermostat and push button on/off switches
- R-22 refrigeration, expansion valves, internal bypass, service valves
- High density polyethylene tank with 1/2" insulation, tank level gauge, and fill port
- High head, cast iron, centrifugal pumps with brass impellers
- Five year compressor warranty, one year pump warranty, 1 year parts warranty

Single Modular System

tanks and pumps shipped loose

Physical Data

Rated Capacity	Qty	Model	Approx. Ship Wt.	Dimensions			Connections		
Tons	Ea.	Component	Chiller (lbs.)	D	W	H	Water Out	Water In	Drain Cock
1.5	1	AM0151	230	27"	27"	47"	1"	1"	na
	1	19 gallon Poly Tank	15						
	1	3/4 h.p. Pump	45	na	na	na			
2.0	1	AM0201	230	27"	27"	47"	1"	1"	na
	1	26 Gallon Poly Tank	17	18"	26"	19"	1-1/4"	1"	3/4"
	1	1.0 h.p. Pump	47	na	na	na	1"	1-1/4"	na
3.0	1	AM0303	255	23"	33"	53"	1"	1"	na
	1	26 Gallon Poly Tank	17	18"	26"	19"	1-1/4"	1"	3/4"
	1	1.0 h.p. Pump	47	na	na	na	1"	1-1/4"	na
4.0	1	AM0403	300	23"	23"	43"	1"	1"	na
	1	65 Gallon Poly Tank	25	23" Dia.	42"	42"	1-1/4"	1"	3/4"
	1	1.5 h.p. Pump	47	na	na	na	1"	1-1/4"	na
5.0	1	AM00503	420	30"	30"	47"	1"	1"	na
	1	65 Gallon Poly Tank	25	23" Dia.	42"	42"	1-1/4"	1"	3/4"
	1	1.5 h.p. Pump	51	na	na	na	1"	1-1/4"	na
7.5	1	AM0753	576	43"	32"	32.5"	1-1/4"	1-1/4"	na
	1	75 Gallon Poly Tank	25	23" Dia.	42"	42"	1-1/4"	1-1/4"	3/4"
	1	1.5 h.p. Pump*	57	na	na	na	1"	1-1/4"	na
	1	*Motor Starter w/Heaters	51	4"	8"	3"	na	na	na
10.0	1	AM1003	728	43"	47"	32"	1-1/2"	1-1/2"	na
	1	100 Gallon Poly Tank	36	28" Dia.	42"	42"	1-1/2"	1-1/2"	3/4"
	1	2.0 h.p. Pump*	57	na	na	na	1-1/4"	1-1/2"	na
	1	*Motor Starter w/Heaters	5	4"	8"	3"	na	na	na
12.5	1	AM1253	728	43"	70"	32"	1-1/4"	1-1/4"	3/4"
	1	100 Gallon Poly Tank	36	28" Dia.	42"	42"	1-1/2"	1-1/2"	na
	1	2.0 h.p. Pump*	57	na	na	na	1-1/4"	1-1/2"	na
	1	*Motor Starter w/Heaters	5	4"	8"	3"	na	na	na
15.0	1	AM1503	850	80"	41"	38"	1-1/2"	1-1/2"	na
	1	100 Gallon Poly Tank	56	28" Dia.	66"	66"	2"	2"	3/4"
	1	3.0 h.p. Pump*	82	na	na	na	1-1/2"	2"	na
	1	*Motor Starter w/Heaters	5	4"	8"	3"	na	na	na
20.0	1	AM2003	1050	80"	41"	38"	1-1/2"	1-1/2"	na
	1	160 Gallon Poly Tank	96	28" Dia.	66"	66"	2"	2"	3/4"
	1	3.0 h.p. Pump*	82	na	na	na	1-1/2"	2"	na
	1	*Motor Starter w/Heaters	5	4"	8"	3"	na	a	na

- Motor starter with heaters mandatory for warranty , but not included in the standard equipment. See optional price in price sheet
- All tanks are insulated with 1/2" closed cell insulation.

Specifications subject to change without notice.

January 2008

Modular Chiller Electrical Data

Model Number	Power Supply	Rated Tons	Compressors			Fan Motors					Total Amps		
			*Qty	LRA Amps (ea)	RLA Amps (ea)	Qty	Fan HP	RPM	CFM	Total Amps	FLA Amp	Min Ckt	Max Fuse
AM0301	208/1/60	3.0	1	77.0	14.4	1	1/3	1075	2800	1.1	16.3	20	25
AM0303	208-230/3/60	3.0	1	70	10.0	1	1/3			1.4	12.2	14.7	20
AM0304	460/3/60	3.0	1	33	5.1	1	1/3			.80	5.87	7.2	15
AM0401	208-230/1/60	4.0	1	137	20.2	1	1/4	840	3400	1.2	20.2	24.8	37
AM0403	208-230/3/60	4.	1	91.0	12.8	1	1/4			1.4	16.2	19.9	30
AM0404	460/3/60	4.0	1	46.0	6.4	1	1/4			.80	9.7	9.7	15
AM0501	208-230/1/60	5.0	1	141.0	25.3	1	1/4	840	3400	1.2	26.5	33.1	45
AM0503	208-230/3/60	5.0	1	137	18.3	1	1/4			1.4	18.8	23.1	40
AM0504	460/3/60	5.0	1	62	9.0	1	1/4			.80	9.8	12.1	20
AM0753	208-230/3/60	7.5	1	190	25.6	1	3/4	1075	6200	3.3	31.0	34.4	45
AM0754	460/3/60	7.5	1	95	12.8	1	3/4			1.6	16.9	18.7	25
AM1003	208-230/3/60	10.0	1	239	37.8	1	1.0	1100	7500	1.5	40.1	44.4	60
AM1004	460/3/60	10.0	1	125	17.2	1	1.0			.7	20.9	23.2	30
AM1253	208-230/3/60	12.5	2	156	18.6	2	3/4	1100	10,600	8.0	49.8	62.2	60
AM1254	460/3/60	12.5	2	70	8.9	2	3/4			3.6	23.8	29.8	30
AM1503	208-230/3/60	15.0	2	195	32.1	2	3/4	1100	11,600	9.4	67.2	84	90
AM1504	460/3/60	15.0	2	16.4	16.4	2	3/4			5.0	33.2	42	45
AM2003	208-230/3/60	20.0	2	239	42.0	2	1.5	1100	16,000	9.7	83.1	104	110
AM2004	460/3/60	20.0	2	125	19.2	2	1.5			5.0	41.4	52	50

System Weights

Rated Tons	Chiller Module		Reservoirs			Pumps	
	Ship Wt.	Oper. Wt.	Cap. (gal)	Ship Wt.	*Oper. Wt.	H.P.	Ship Wt.
3.0	350	250	40	20	200	1.5	75
4.0	387	287	65	35	350	1.5	75
5.0	392	292	65	35	350	1.5	75
7.5	680	580	65	35	350	1.5	75
10.0	770	650	110	50	500	2.0	80
12.5	865	735	110	50	500	2.0	80
15.0	1117	917	110	50	500	3.0	90
20.0	1198	998	150	65	650	3.0	90

Pump Power

	230/60/1		230/60/3	
	FLA Amps	Max Brkr	FLA Amps	Max Brkr
1.0 hp	7.5	10.0	4.2	5.6
1.5 hp	8.6	10.7	6.0	7.5
2.0 hp	9.1	11.3	6.8	9.0
3.0 hp	CF	CF	8.0	12.0
5.0 hp	CF	CF	13.5	16.8
7.5 hp	CF	CF	25.0	31.3

*Weight of fluid as 40% propylene glycol solution
Specifications subject to change without notice.

